



Machinery Daily Transactions

This section describes the how to log and manage machinery daily transactions in ProjectVIEW

Table of Contents

| | | |
|-----|--|---|
| 1 | Introduction | 3 |
| 2 | Creation of a Machinery Daily Transaction..... | 4 |
| 2.1 | Web Version..... | 4 |
| 2.2 | Desktop Client Version..... | 6 |
| 3 | Processing Machinery Daily Transactions..... | 7 |
| 4 | Machinery Reports..... | 8 |
| 5 | Appendix – Machinery Settings | 9 |

1 Introduction

The web version of ProjectVIEW allows the logging of the machinery usage through machinery daily transactions. These can later be reviewed in the desktop client version and used by all appropriate departments.

Machinery daily transactions can be created both in the web and desktop versions of ProjectVIEW. Both procedures are described in the next chapters.

2 Creation of a Machinery Daily Transaction

2.1 Web Version

To create an employee daily transaction in the web version, the user has to navigate to:

“MACHINERIES MENU” > “Machinery Daily Trans”

This will display a grid with all the machinery daily transactions:

| T Date | Company | Branch | Project | SubProject | Unit | Machinery | Cost Account Value | EQC List Item |
|------------|---------|----------------|---------------------------|------------|----------------|--------------------------|------------------------------|---|
| 10/26/2019 | SaudiCo | Bus Stops - JV | Bus Stops Project Phase-I | | | AUTO WINDOW SHUTTER SLOT | | |
| 10/27/2019 | SaudiCo | Bus Stops - JV | Bus Stops Project Phase-I | | | AUTO WINDOW SHUTTER SLOT | | |
| 10/28/2019 | SaudiCo | Bus Stops - JV | Bus Stops Project Phase-I | | | AUTO WINDOW SHUTTER SLOT | | |
| 10/29/2019 | SaudiCo | Bus Stops - JV | Bus Stops Project Phase-I | | | AUTO WINDOW SHUTTER SLOT | | |
| 10/26/2019 | SaudiCo | Bus Stops - JV | Bus Stops Project Phase-I | | | COMPRESSOR | | |
| 10/27/2019 | SaudiCo | Bus Stops - JV | Bus Stops Project Phase-I | | | COMPRESSOR | | |
| 10/28/2019 | SaudiCo | Bus Stops - JV | Bus Stops Project Phase-I | | | COMPRESSOR | | |
| 10/29/2019 | SaudiCo | Bus Stops - JV | Bus Stops Project Phase-I | | | COMPRESSOR | | |
| 10/30/2019 | SaudiCo | Bus Stops - JV | Bus Stops Project Phase-I | | | COMPRESSOR | | |
| 10/30/2019 | SaudiCo | SaudiCo | KAFD CL1 | | | AUTO WINDOW SHUTTER SLOT | | |
| 10/31/2019 | SaudiCo | SaudiCo | KAFD CL1 | | | AUTO WINDOW SHUTTER SLOT | | |
| 1/12/2020 | SaudiCo | Bus Stops - JV | Bus Stops Project Phase-I | BRIDGES | BRJ 111-02 | CONCRETE VIBRATOR | Structure Backfill & Compact | Engine backfill material arising from excavations |
| 1/12/2020 | SaudiCo | Bus Stops - JV | Bus Stops Project Phase-I | ETERN | 42045 (S.TERM) | CLEANING MACHINE | Interior Doors | Type D2 |
| 1/13/2020 | SaudiCo | Bus Stops - JV | Bus Stops Project Phase-I | ETERN | 42045 (S.TERM) | CLEANING MACHINE | Interior Doors | Type D1 par |
| 1/12/2020 | SaudiCo | Bus Stops - JV | Bus Stops Project Phase-I | S.TERM | 41001 (S.TERM) | CAR WASHING MACHINE | Interior Doors | Type D4 |
| 1/13/2020 | SaudiCo | Bus Stops - JV | Bus Stops Project Phase-I | S.TERM | 41001 (S.TERM) | CAR WASHING MACHINE | Interior Doors | Type D4 |
| 1/14/2020 | SaudiCo | Bus Stops - JV | Bus Stops Project Phase-I | S.TERM | 41001 (S.TERM) | CAR WASHING MACHINE | Interior Doors | Type D4 |
| 1/15/2020 | SaudiCo | Bus Stops - JV | Bus Stops Project Phase-I | S.TERM | 41001 (S.TERM) | CAR WASHING MACHINE | Interior Doors | Type D4 |
| 1/16/2020 | SaudiCo | Bus Stops - JV | Bus Stops Project Phase-I | S.TERM | 41001 (S.TERM) | CAR WASHING MACHINE | Interior Doors | Type D4 |
| 1/18/2020 | SaudiCo | Bus Stops - JV | Bus Stops Project Phase-I | S.TERM | 41001 (S.TERM) | CAR WASHING MACHINE | Interior Doors | Type D4 |
| 1/19/2020 | SaudiCo | Bus Stops - JV | Bus Stops Project Phase-I | S.TERM | 41001 (S.TERM) | CAR WASHING MACHINE | Interior Doors | Type D4 |
| 1/20/2020 | SaudiCo | Bus Stops - JV | Bus Stops Project Phase-I | S.TERM | 41001 (S.TERM) | CAR WASHING MACHINE | Interior Doors | Type D4 |
| 1/21/2020 | SaudiCo | Bus Stops - JV | Bus Stops Project Phase-I | S.TERM | 41001 (S.TERM) | CAR WASHING MACHINE | Interior Doors | Type D4 |
| 1/22/2020 | SaudiCo | Bus Stops - JV | Bus Stops Project Phase-I | S.TERM | 41001 (S.TERM) | CAR WASHING MACHINE | Interior Doors | Type D4 |
| 1/23/2020 | SaudiCo | Bus Stops - JV | Bus Stops Project Phase-I | S.TERM | 41001 (S.TERM) | CAR WASHING MACHINE | Interior Doors | Type D4 |
| 1/25/2020 | SaudiCo | Bus Stops - JV | Bus Stops Project Phase-I | S.TERM | 41001 (S.TERM) | CAR WASHING MACHINE | Interior Doors | Type D4 |
| 1/26/2020 | SaudiCo | Bus Stops - JV | Bus Stops Project Phase-I | S.TERM | 41001 (S.TERM) | CAR WASHING MACHINE | Interior Doors | Type D4 |
| 1/27/2020 | SaudiCo | Bus Stops - JV | Bus Stops Project Phase-I | S.TERM | 41001 (S.TERM) | CAR WASHING MACHINE | Interior Doors | Type D4 |
| 1/28/2020 | SaudiCo | Bus Stops - JV | Bus Stops Project Phase-I | S.TERM | 41001 (S.TERM) | CAR WASHING MACHINE | Interior Doors | Type D4 |
| 1/29/2020 | SaudiCo | Bus Stops - JV | Bus Stops Project Phase-I | S.TERM | 41001 (S.TERM) | CAR WASHING MACHINE | Interior Doors | Type D4 |

Clicking on the “+” button on the lower left of the screen will start the transaction creation process. To edit existing transactions, the user can double click on any of them in the grid.

When a new transaction is created or an existing one edited, the following form is displayed:

The mandatory fields are:

- ✓ T Date
- ✓ Company
- ✓ Branch
- ✓ Project
- ✓ Machinery
- ✓ Number of Days/Hours or Kilometers

Clicking on the “OK” button will complete and save the transaction.

Note

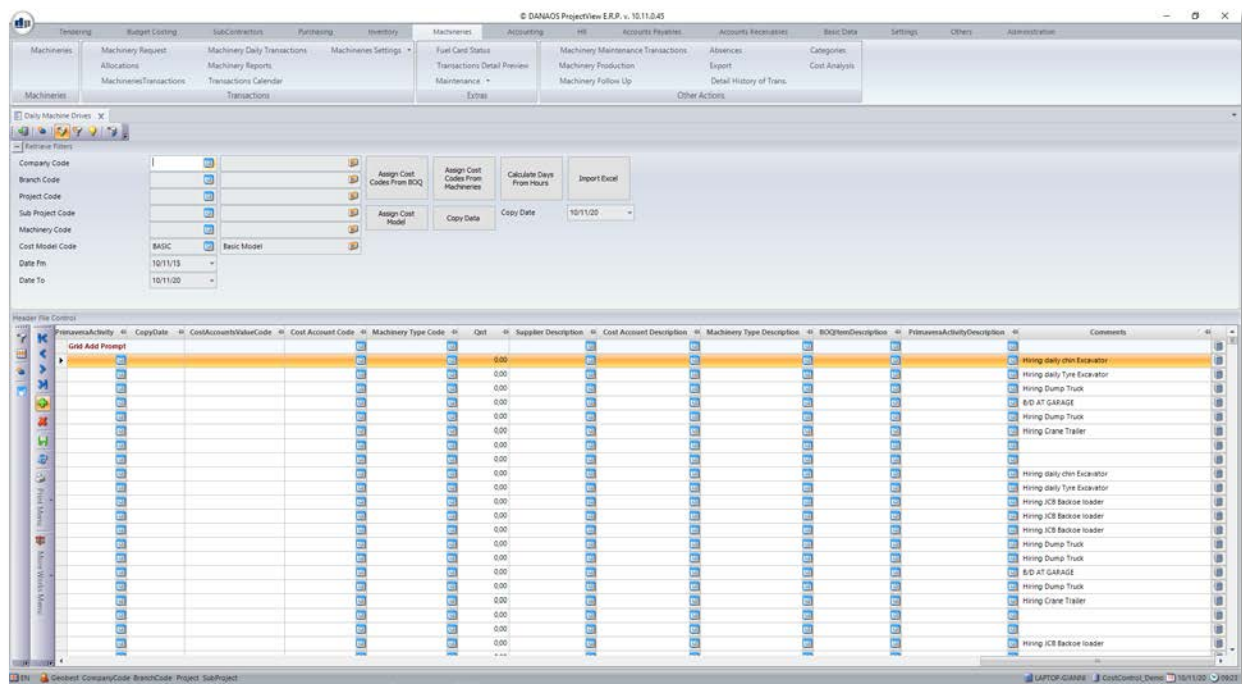
- ✓ If the user enters “Hours” and/or “Days”, they have to enter the amount of hours and/or days the machinery was used for since the last transaction.
- ✓ If the user enters “Kilometers”, they have to enter the amount shown in the machinery’s meter, i.e. the total kilometers

2.2 Desktop Client Version

To create an employee daily transaction in the desktop client version, the user has to navigate to:

“Machineries” > “Transactions” > “Machinery Daily Transactions”

This will display a grid with all the machinery daily transactions:



Clicking on the *“Retrieve”* button will populate the grid with all the transactions matching the parameters (if any parameters are set).

The user can add a new transaction or edit an existing one by using the grid.

The mandatory fields are:

- ✓ T Date
- ✓ Company Code
- ✓ Branch Code
- ✓ Project Code
- ✓ Machinery Code
- ✓ Number of Days/Hours or Kilometers

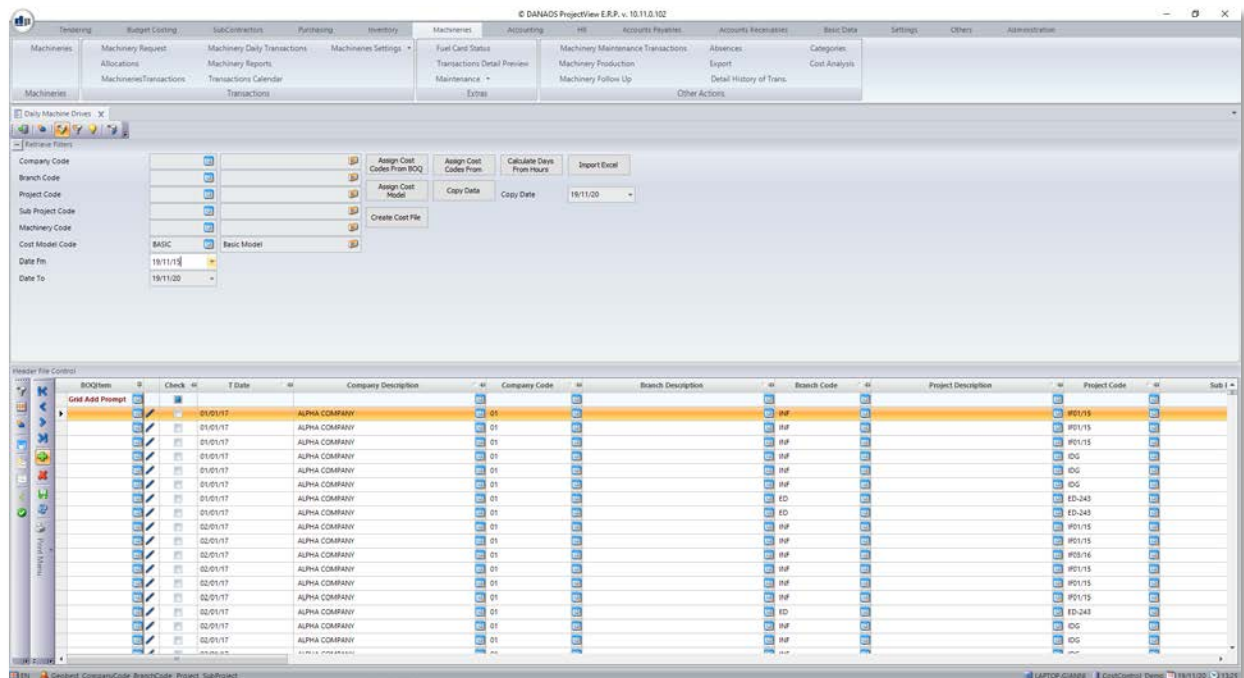
Having done the above, the user must save.

3 Processing Machinery Daily Transactions

To review the machinery daily transactions, the user has to navigate to:

“Machineries” > “Transactions” > “Machinery Daily Transactions”

This will display an empty grid. By clicking on the *“Retrieve”* button, the grid is populated with all the machinery transactions:



This grid can be refined by using the parameters above it before retrieving data.

This will allow the assignment of BOQ lines, Primavera Activities and Cost Codes if any of those are missing from the entries.

“Number Of Hours” or *“Kilometers”* can also be assigned if missing.

Note

Since machineries are used for a number of days on a project, it is possible to assign the same *“BOQ Item”* to multiple lines. To do so, the user must assign a single *“BOQ Item”*, select all the lines where it has to be copied (by ticking the *“Check”* column) and then click on the *“BOQ Item Apply On Selected”* button located in the grid’s sidebar:



4 Machinery Reports

To view all available reports, the user has to navigate to:

“Machineries” > “Transactions” > “Machinery Reports”

This will display the following form:

The screenshot displays the ProjectVIEW ERP interface for the 'Machinery Reports' section. The top navigation bar includes tabs for Tendering, Budget Costing, SubContractors, Purchasing, Inventory, Machineries, Accounting, HR, Accounts Payables, Accounts Receivables, Basic Data, Settings, Others, and Administration. The 'Machinery Reports' window is open, showing a grid of report filters with columns for Company, Branch, Project, SubProject, Unit, PmMachinery, TmMachinery, Supplier, Date From, Date To, and Date Start. Below the filters, there are radio buttons for 'Expenses of Machineries', 'Production Cards', 'Cost of Machineries per Cost Type', 'Machinery Follow-Up', 'Machinery Transaction Per Date', 'Machinery Transaction Per Project', and 'Machinery Transaction Per Machinery'. A 'Print Preview' button is visible at the bottom right of the form.

After providing the appropriate parameters the user can select a report and click on the *“Print Preview”* button to view it.

5 Appendix – Machinery Settings

There are various fields in the machineries, which use predefined codes. These are:

- ✓ Garages
- ✓ Machinery Expenses Types
- ✓ Car Traffic Licenses
- ✓ Car Technical Check
- ✓ Machinery Types
- ✓ Machinery Status
- ✓ Machinery Locations
- ✓ Gearbox Types
- ✓ Capacity Types
- ✓ Fuel Types
- ✓ Lubricant Types
- ✓ Fuel Card
- ✓ Fuel Card Usage Types
- ✓ Car Insurance Types
- ✓ Machinery Analytical Characteristics

To view/add/edit the above, the user has to navigate to:

“Machineries” > “Transactions” > “Machinery Settings” > ...

and then choose the appropriate item from the list.



In case of any queries or support issues, please
contact us:

DANAOS Projects Software Solutions

Tamani Head Office - Office 1923

Business Bay

Dubai - UAE, P.O. Box 24051

Email: support@danaos-projects.com

Tel: +971 4 8714149