



ProjectVIEW^{ERP}

Cost Monitoring Solution

Machineries

This section describes the functionality of the Machineries module in ProjectVIEW

Table of Contents

1	Introduction	3
2	Machineries.....	4
2.1	Machinery Form.....	5
2.1.1	Basic Data.....	5
2.1.2	Purchase Data	7
2.1.3	Sell Data	8
2.1.4	Scheduling.....	9
2.1.5	Machineries Technical Characteristics.....	10
2.1.6	Insurances	11
2.1.7	Machinery Requests.....	12
2.1.8	Machineries Employees	13
2.1.9	Custom Fields.....	14
2.1.10	Connected Documents.....	15
3	Machinery Reports.....	16
4	Appendix – Machinery Settings	17

1 Introduction

The Machineries module in ProjectVIEW has been designed to monitor the machineries, their allocation, and maintenance.

This manual discusses how machineries are created and managed.

2 Machineries

To view a list of the machineries, the user must navigate to:

“Machineries” > “Machineries” > “Machineries”

Machinery Code	Machinery Description	Machinery Description En	Machinery Type Co	Machinery Type Description	Machinery Status Cod	Machinery Status Description	Machinery Ki	Machinery Lo
DM-0040	This is my demo asset					Unspecified		
DM-0040-003	This is my demo asset					Unspecified		
DM-0040-003	This is my demo asset					Unspecified	003	Binder
E-4UH-1501	HOISTARM (0-85 M/SEC)		035	Hoist	1	Active	Unspecified	
E-4UH-1502	HOISTARM (0-85 M/SEC)		035	Hoist	1	Active	Unspecified	
E-4UH-1503	HOISTARM (0-85 M/SEC)		035	Hoist	1	Active	Unspecified	
E-4UH-1504	HOISTARM (0-85 M/SEC)		035	Hoist	1	Active	Unspecified	
E-4UH-1505	FAST HOIST		035	Hoist	1	Active	Unspecified	
E-4UH-1506	Passenger & Material Hoist SC		035	Hoist	1	Active	Unspecified	
E-4UH-1507	Passenger & Material Hoist SC		035	Hoist	1	Active	Unspecified	
E-8B-2003	SWEEPER W/BKT / PALLET FORK		070	Sweeper	1	Active	Unspecified	
E-8B-2004	SWEEPER W/BKT / PALLET FORK		070	Sweeper	1	Active	Unspecified	
E-8B-2005	JCB SWEEPERS (880/A7495)		070	Sweeper	1	Active	Unspecified	
E-8B-2006	JCB SWEEPERS (880/A7495)		070	Sweeper	1	Active	Unspecified	
E-8BC-1001	ICARD BAR CUTTING MACHINE		006	Cutting Machine	1	Active	Unspecified	
E-8BC-1002	ICARD BAR BEDDING MACHINE		006	Binding Machine	1	Active	Unspecified	
E-8BC-1003	Danish Binder		006	Binding Machine	1	Active	Unspecified	
E-8BC-1004	BINDING MACHINE		006	Binding Machine	1	Active	Unspecified	
E-8BC-1005	Binding machine P&Z - Italian		006	Binding Machine	1	Active	Unspecified	
E-8BC-1006	REBAR BENDING MACHINE CMB-42		006	Binding Machine	1	Active	Unspecified	
E-8BC-1007	REBAR BENDING MACHINE CMB-42		006	Binding Machine	1	Active	Unspecified	
E-8BC-1008	REBAR BENDING MACHINE CMB-42		006	Binding Machine	1	Active	Unspecified	
E-8BC-1009	Rebar Bending Machine OFMER II		006	Binding Machine	1	Active	Unspecified	
E-8BC-1010	S.Bending Machine F36-Italian		006	Binding Machine	1	Active	Unspecified	
E-8KH-2001	Backhoes Loader CAT -8H30W		002	Backhoe Loader	1	Active	Unspecified	
E-CLN-0001	EDGING MACHINE W/ TABLE		027	Edging Machine	1	Active	Unspecified	
E-CLN-0002	CONCRETE VIBRATOR		018	Concrete vibrator	1	Active	Unspecified	
E-CLN-0003	CLEANING MACHINE		084	Washing & Cleaning	1	Active	Unspecified	
E-CLN-0004	CAR WASHING MACHINE		084	Washing & Cleaning	1	Active	Unspecified	
E-CLN-0005	SPRAYING MACHINE FOR CEMENT		084	Washing & Cleaning	1	Active	Unspecified	
E-CLN-0006	EDGING MACHINE		027	Edging Machine	1	Active	Unspecified	
E-CLN-0007	CAR WASHING MACHINE		084	Washing & Cleaning	1	Active	Unspecified	

Editing or creating a new item will display the machinery form.

2.1 Machinery Form

2.1.1 Basic Data

This tab contains the machinery's basic information.

Mandatory fields are:

- ✓ Machinery Code
- ✓ Machinery Description
- ✓ Machinery Type Code
- ✓ Machinery Status Code
- ✓ Asset Code
- ✓ Item Code (this is used by the purchasing department if this machinery needs to be procured)

The rest of the fields are optional but it is recommended that, in order for the cost budgeting module to work efficiently, to also provide:

- ✓ Cost Account Code
- ✓ Cost Accounts Value Code

If this machinery belongs to a subcontractor, the following fields are mandatory:

- ✓ “Subcontractor”
- ✓ “Subcontractor’s Machinery”

It is possible to add the hourly cost for the machinery. This must **not** include the driver/operator’s cost as this is monitored through the HR module.

An important distinction regarding cost has to be made; each machinery type has a pre-assigned cost. To view/ change this, the user must navigate to:

“Machineries” > “Transactions” > “Machineries Settings” > “Machinery Types”

Machinery Type Code	Machinery Type Description	Machinery Type Description En	Pinnumera Code	Machinery Type Ma Pr	Pinnumera Resource Co	InternalCost	ExternalCost	Measurement Code	AmphourDailyUp	FuelConsumPerUnit	CostFuel
001	Asphalt Cutter					50	0		0	0	0
002	Backhoe Loader					0	0		0	0	0
003	Battery					0	0		0	0	0
004	Batteries and Charger					0	0		0	0	0
005	Binder					0	0		0	0	0
006	Binding Machine					0	0		0	0	0
007	Buggies (Acrotic Cat)					0	0		0	0	0
008	Bus (Passenger)					0	0		0	0	0
009	Calibration Comparing Device (DUT)					0	0		0	0	0
010	Chain Block & Gear					0	0		0	0	0
011	Compressor					0	0		0	0	0
012	Compressor					0	0		0	0	0
013	Concrete & Exhaust Fan					0	0		0	0	0
014	concrete mixer					0	0		0	0	0
015	Concrete Pump					0	0		0	0	0
016	Concrete Vibrator					0	0		0	0	0
017	Construction tool					0	0		0	0	0
018	Crane Loading Platform					0	0		0	0	0
019	Cutting Machine					0	0		0	0	0
020	Cutting Tool					0	0		0	0	0
021	Diesel Tanker					0	0		0	0	0
022	Digger & Shovel					0	0		0	0	0
023	Drill					0	0		0	0	0
024	Dumper					0	0		0	0	0
025	Dumper Equipment					0	0		0	0	0
026	Dust Collection					0	0		0	0	0
027	Edging Machine					0	0		0	0	0
028	Fabric					0	0		0	0	0
029	Frame Press					0	0		0	0	0
030	Gas Cylinders					0	0		0	0	0
031	Generator					0	0		0	0	0
032	Global Positioning System (Gps)					0	0		0	0	0
033	Grinder					0	0		0	0	0
034	Hammer					0	0		0	0	0

If a specific machinery has a different cost, that cost will be used in the system. For example:

- ✓ Asphalt Cutter (machinery type) has a cost of 50.
- ✓ Machinery ACT-3D1 has a cost of 55. Its machinery type is Asphalt Cutter.
- ✓ Machinery ACT-3D2 has no cost. Its machinery type is Asphalt Cutter.

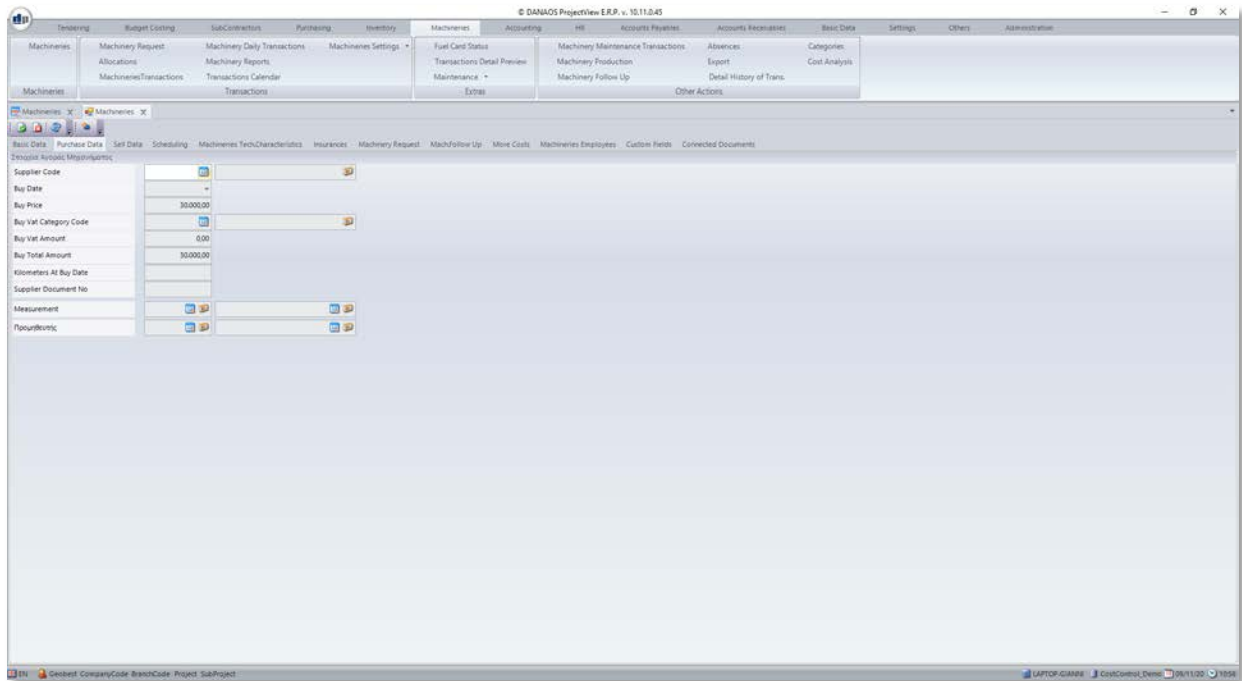
When the system uses ACT-3D1, the cost will be 55. When it uses ACT-3D2, the cost will be 50.

Note

The user can add/change machinery types, status codes etc. This is explained at the end of this manual, in the appendix regarding settings.

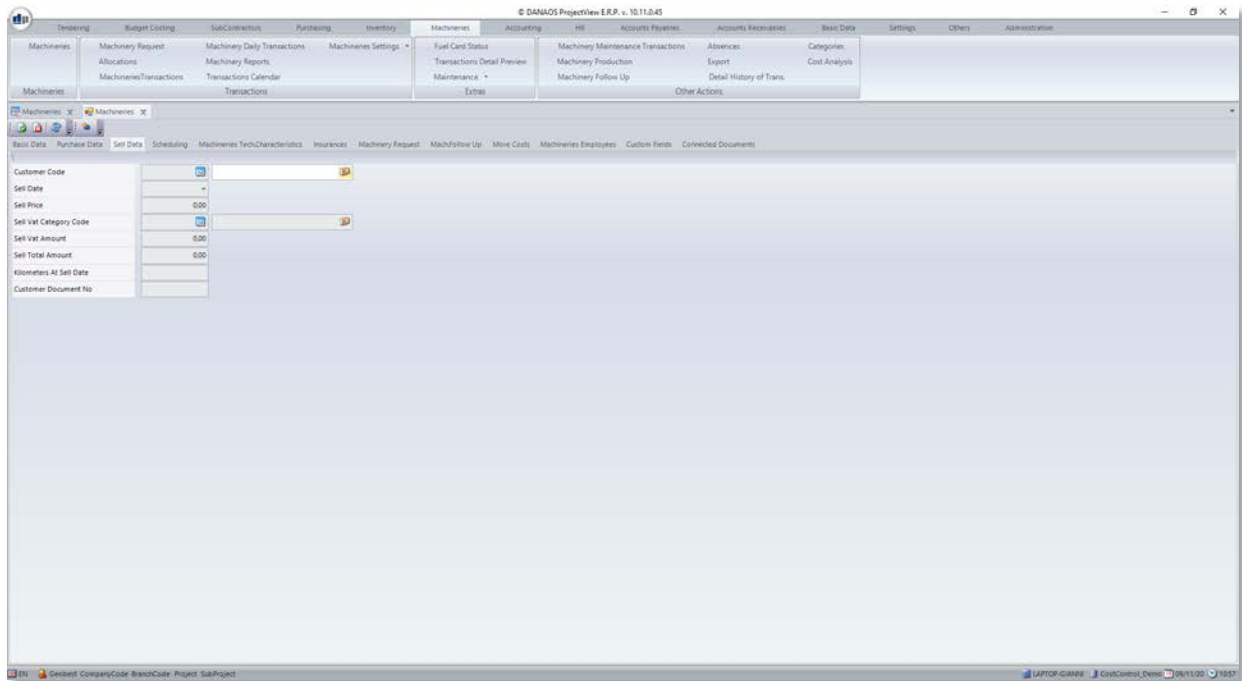
2.1.2 Purchase Data

This tab contains information regarding the machinery's purchase.



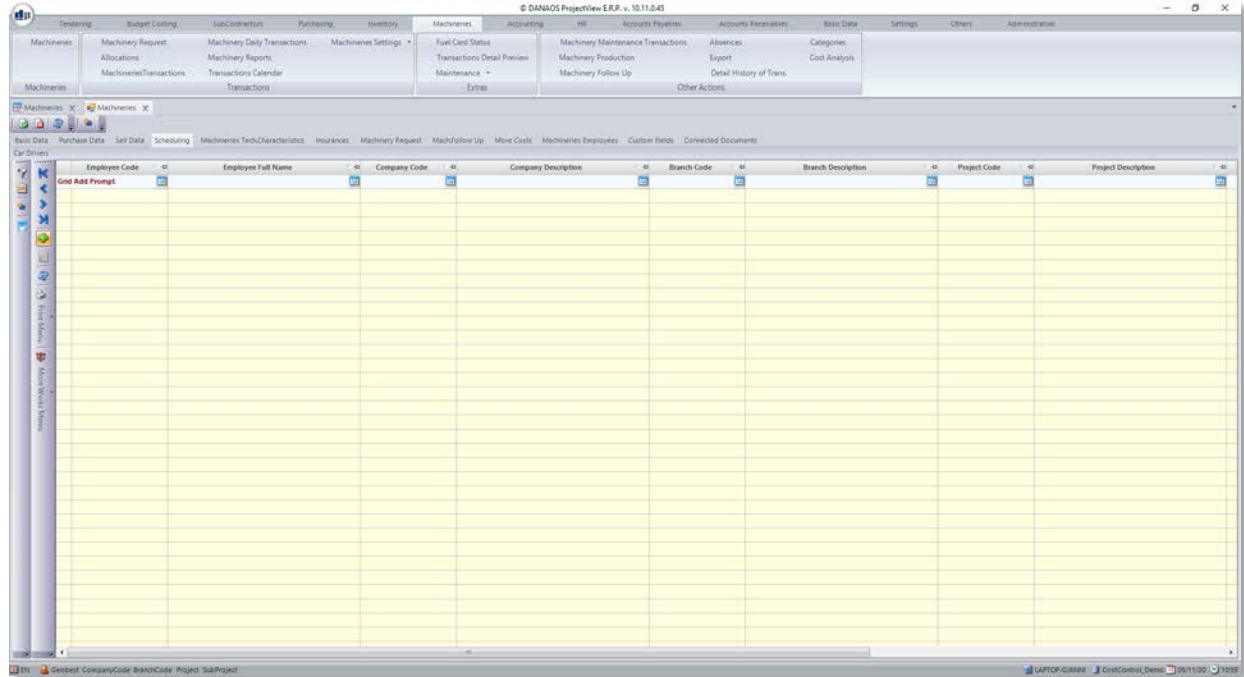
2.1.3 Sell Data

This tab contains information regarding the machinery's sale.



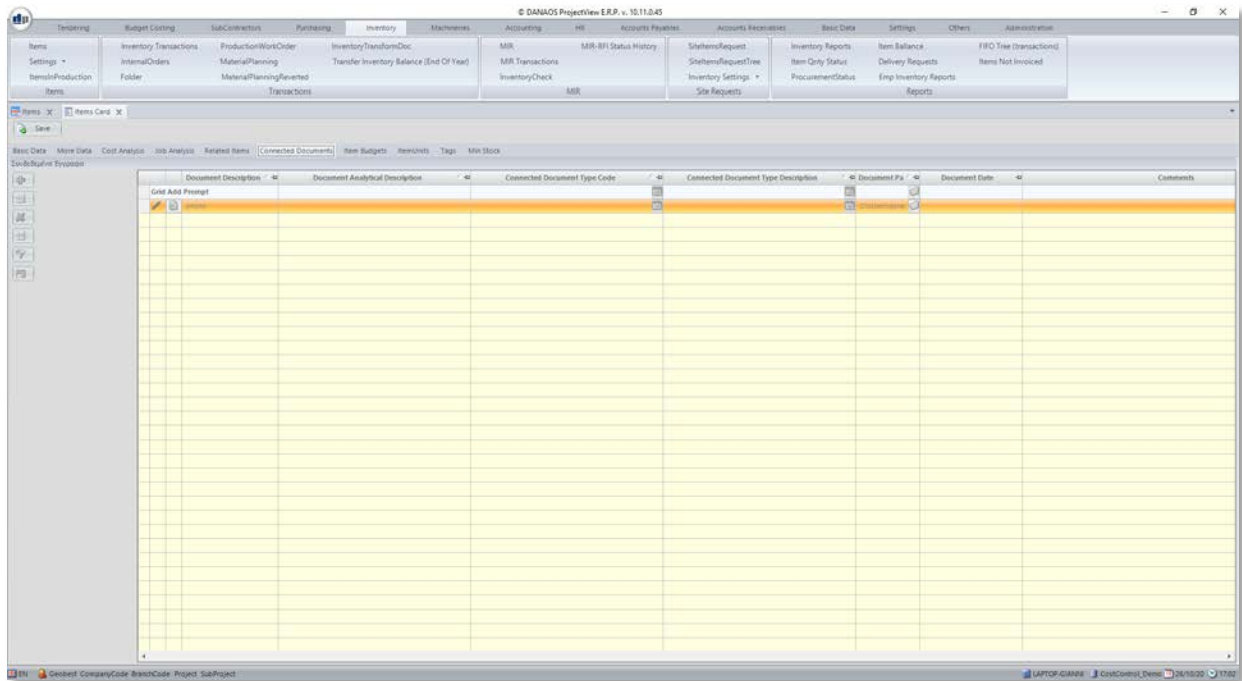
2.1.4 Scheduling

This tab allows users to log the usage of this machinery. The user can log the operator, project, branch etc

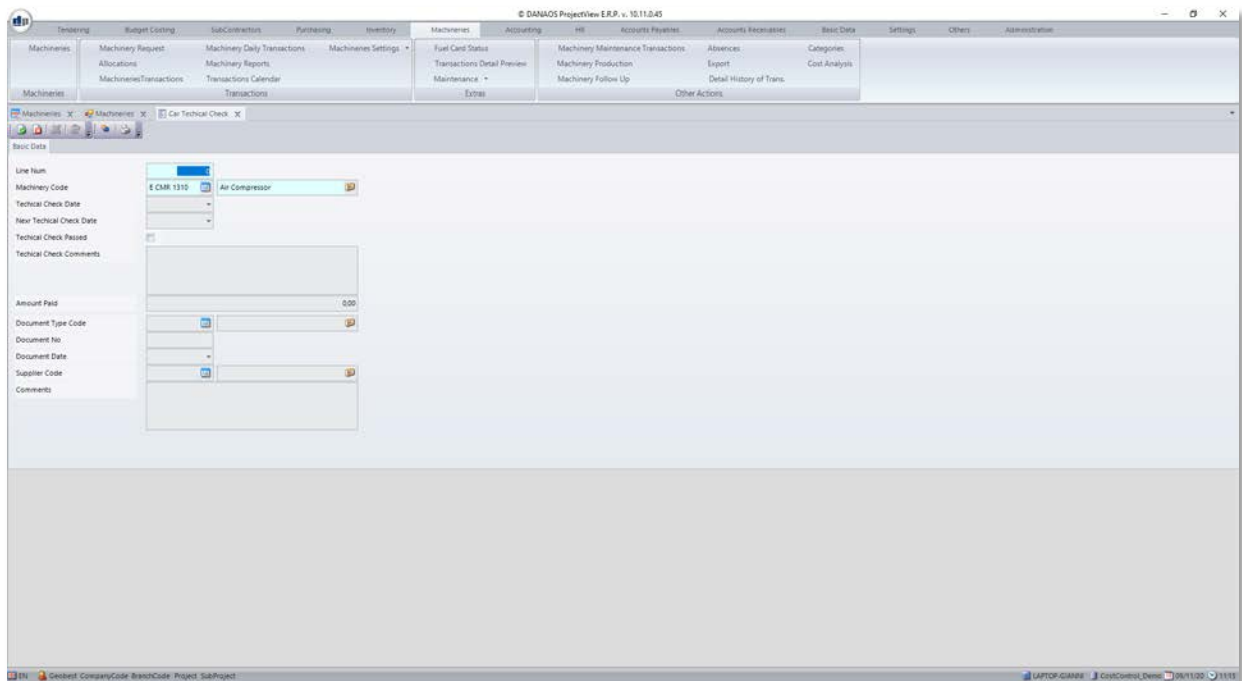


2.1.5 Machineries Technical Characteristics

This tab allows the user to log the technical checks the machinery goes through.

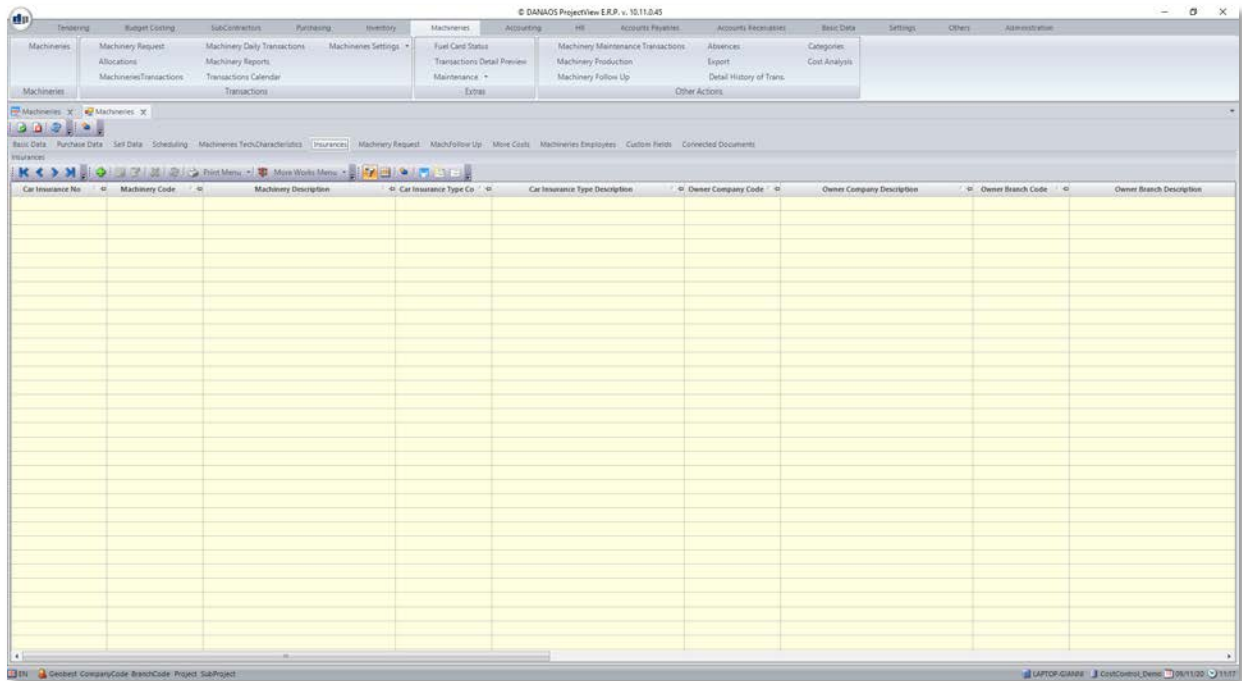


Adding a new check in the grid will display the following form:

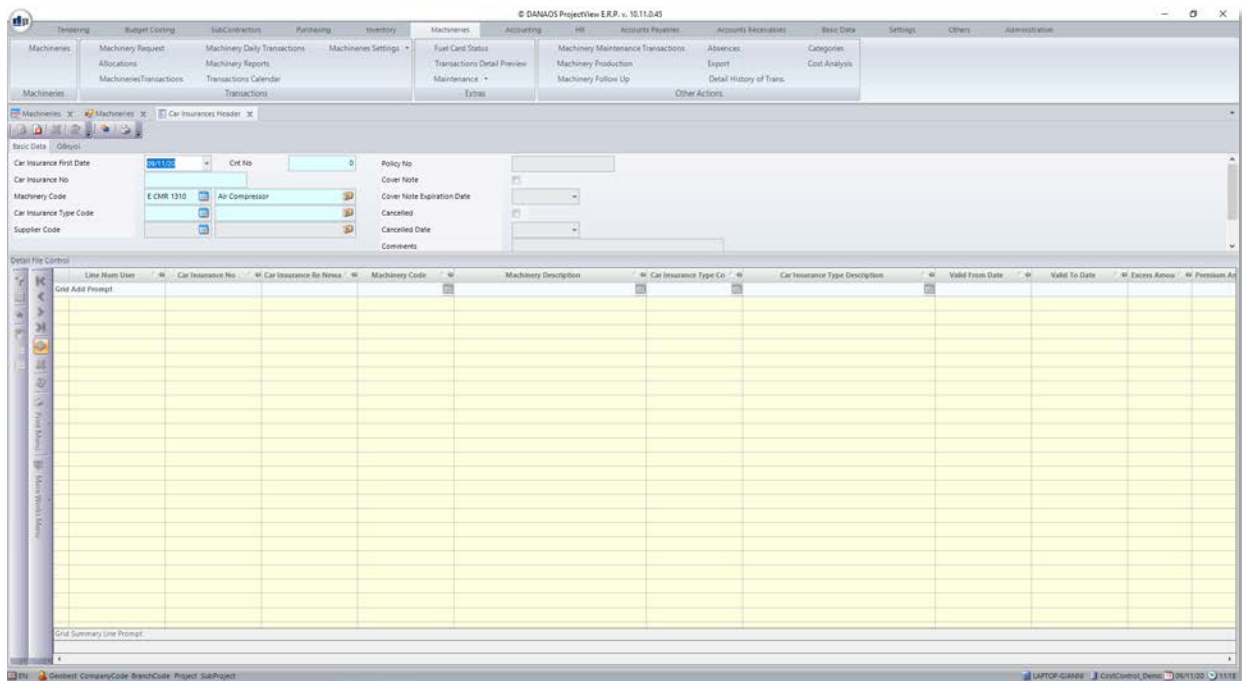


2.1.6 Insurances

This tab allows the user to log the insurance policies for this machinery.



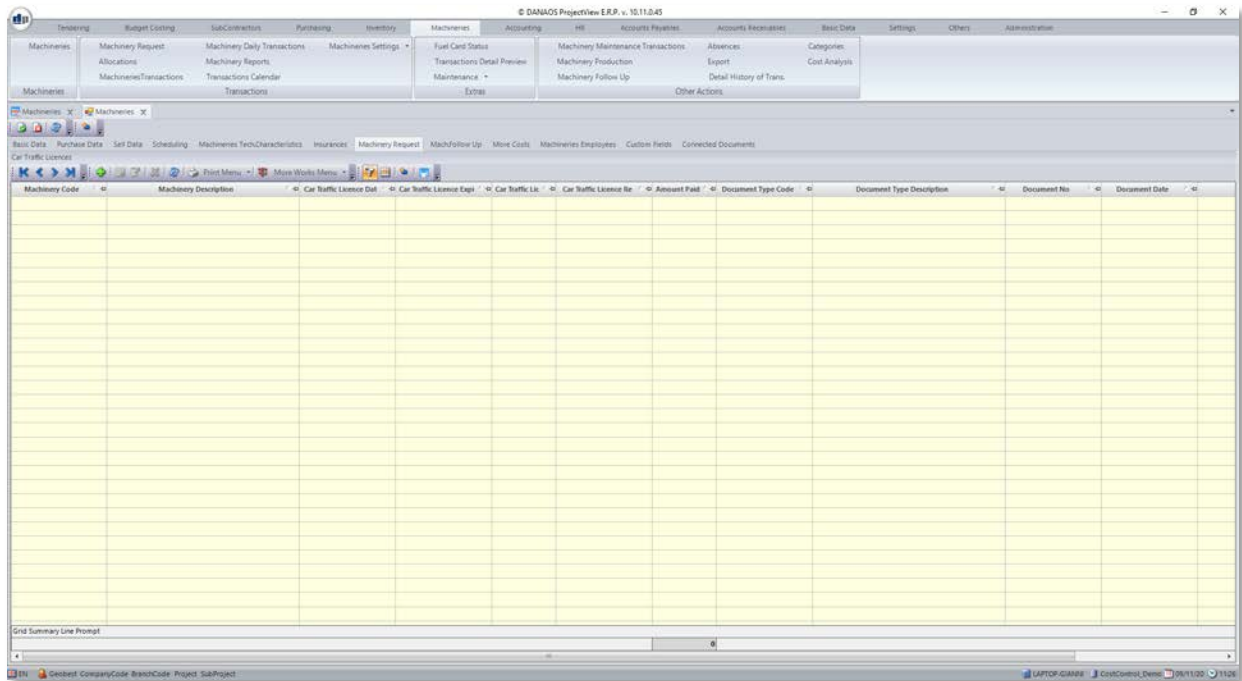
Adding a new insurance in the grid will display the insurance form:



The “*Basic Data*” tab in the insurance form contains all the necessary details of the insurance. There is a second tab, which allows the user to assign specific drivers to that particular insurance policy.

2.1.7 Machinery Requests

This tab lists all the machinery requests for this machinery.

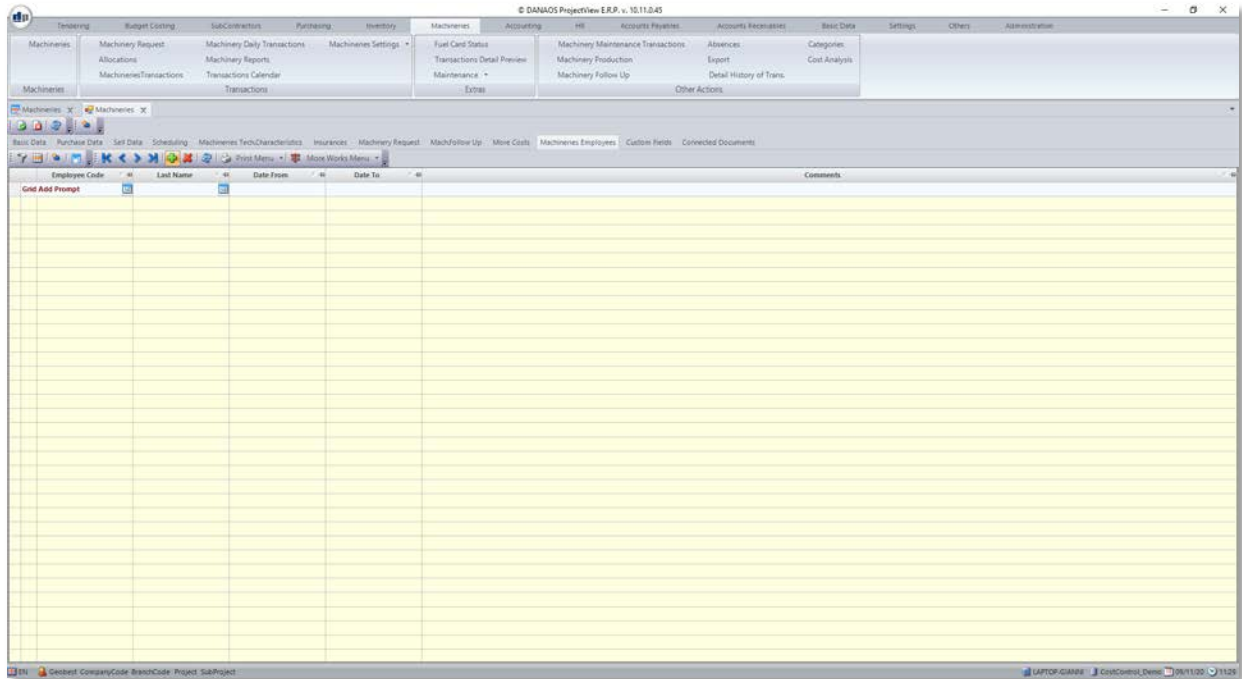


Note

Machinery requests are discussed in depth in the *“06 02 Machinery Requests”* manual.

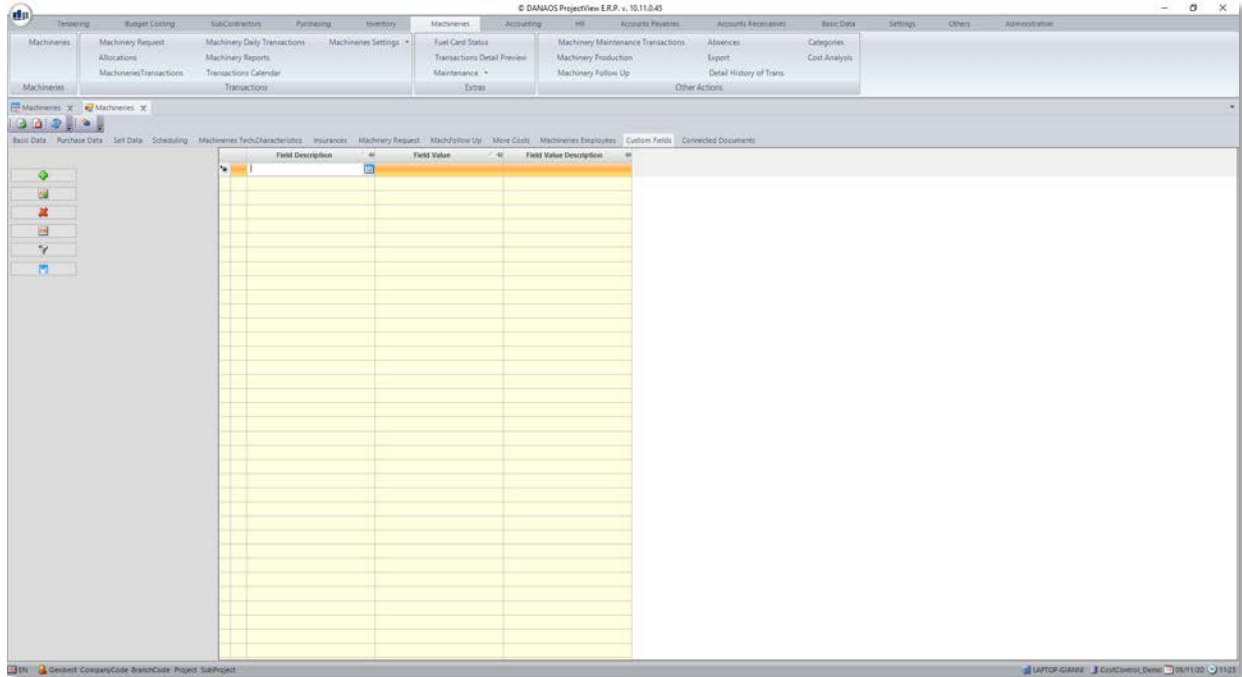
2.1.8 Machineries Employees

This tab lists all the employees that have been assigned to this machinery.



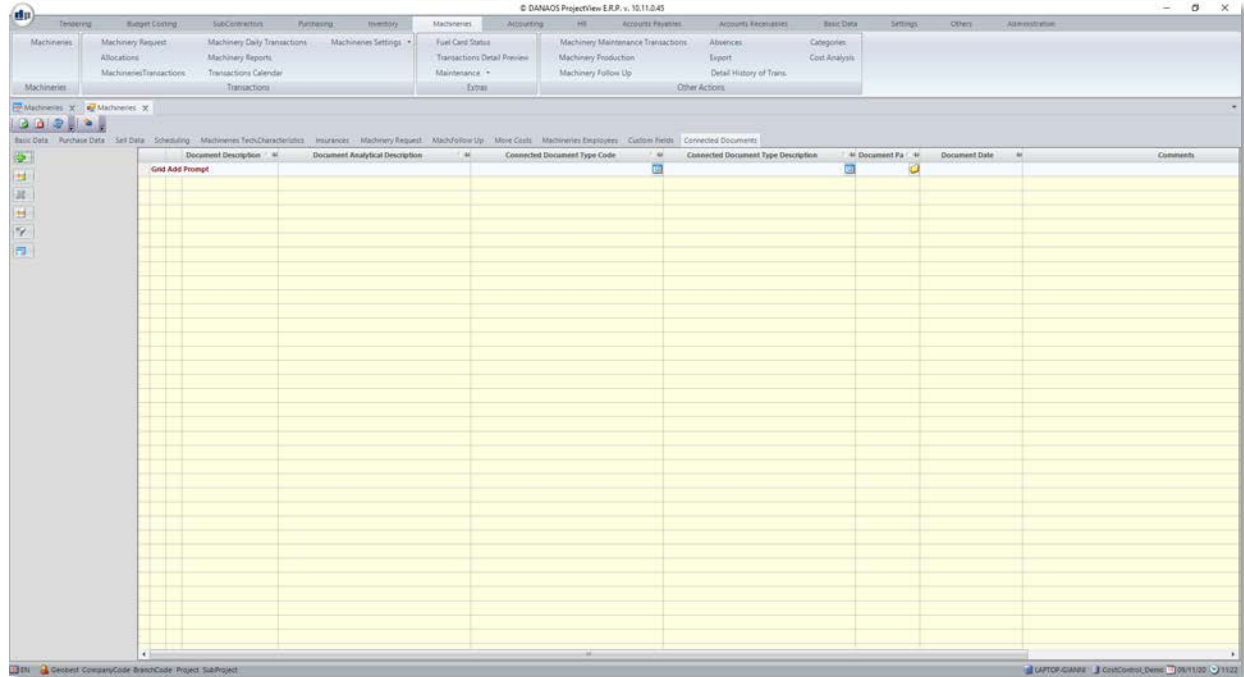
2.1.9 Custom Fields

There may be some technical or other characteristics, unique to this machinery. It is possible to add these by filling in the grid in this tab.



2.1.10 Connected Documents

It is possible to associate a machinery with one or more documents (e.g. Manuals). This tab allows for these documents to be associated with the machinery.

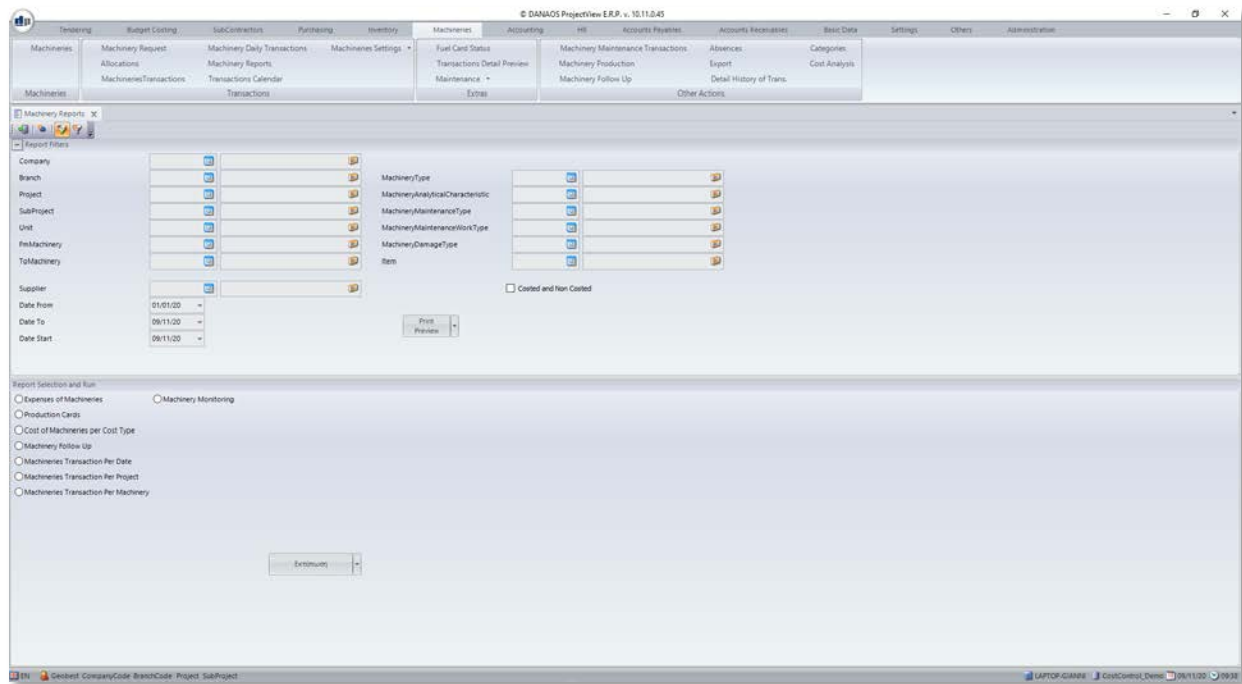


3 Machinery Reports

To view all available reports, the user has to navigate to:

“Machineries” > “Transactions” > “Machinery Reports”

This will display the following form:



After providing the appropriate parameters the user can select a report and click on the *“Print Preview”* button to view it.

4 Appendix – Machinery Settings

There are various fields in the machineries, which use predefined codes. These are:

- ✓ Garages
- ✓ Machinery Expenses Types
- ✓ Car Traffic Licenses
- ✓ Car Technical Check
- ✓ Machinery Types
- ✓ Machinery Status
- ✓ Machinery Locations
- ✓ Gearbox Types
- ✓ Capacity Types
- ✓ Fuel Types
- ✓ Lubricant Types
- ✓ Fuel Card
- ✓ Fuel Card Usage Types
- ✓ Car Insurance Types
- ✓ Machinery Analytical Characteristics

To view/add/edit the above, the user has to navigate to:

“Machineries” > “Transactions” > “Machinery Settings” > ...

and then choose the appropriate item from the list.



In case of any queries or support issues, please
contact us:

DANAOS Projects Software Solutions

Tamani Head Office - Office 1923

Business Bay

Dubai - UAE, P.O. Box 24051

Email: support@danaos-projects.com

Tel: +971 4 8714149