



Import of a BOQ into ProjectVIEW

This section describes how a user can modify any BOQ file in Excel format in order for it to be imported into ProjectVIEW. Some minor changes to the source file are required.

Table of Contents

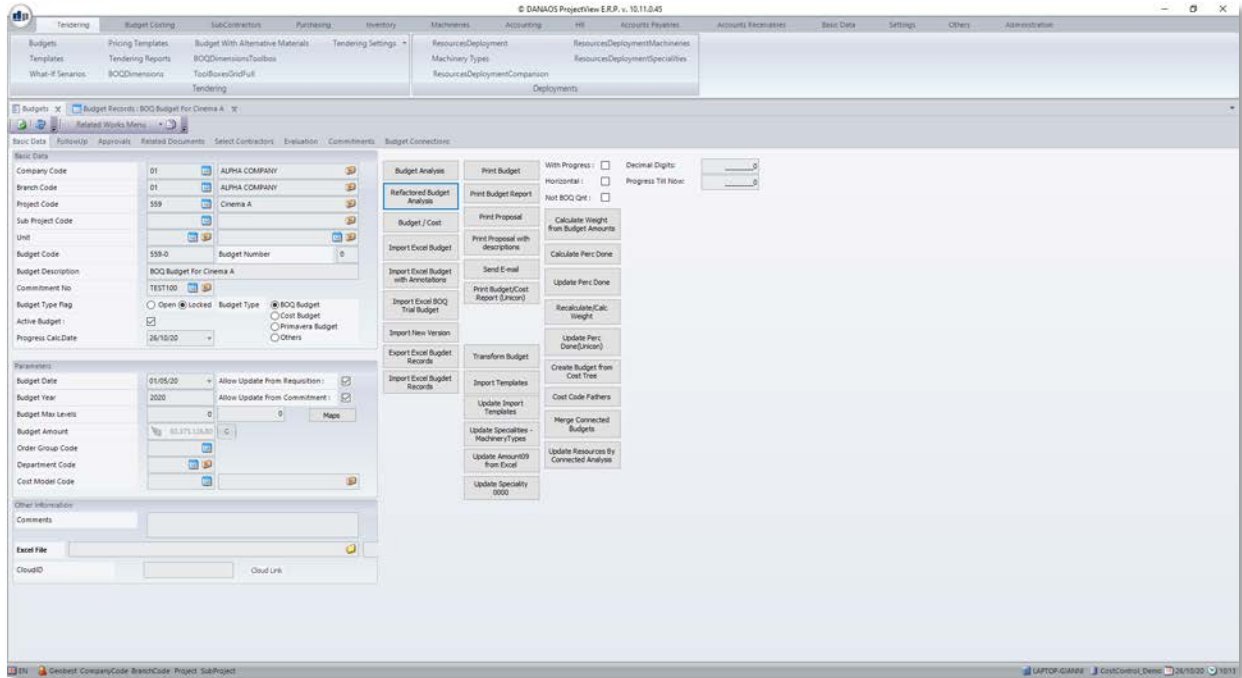
1	Introduction	3
2	Step 1 – Create a new budget.....	4
3	Step 2 – Excel Format.....	5
4	Step 3 – Result in ProjectVIEW	7

1 Introduction

ProjectVIEW has the ability to read an Excel file and parse its contents to create an editable BOQ which can be used by ProjectVIEW's modules.

2 Step 1 – Create a new budget

Create a new budget. After inputting all the necessary data, the import button must be clicked



Please enter the File Name or select the excel file by clicking on the “Browse” button.

Please select the starting character for the division field. For example, if the cost code is “02.03.G” and we enter 4 as the starting character for the division, the system will set “03” as the division field during the upload.

3 Step 2 – Excel Format

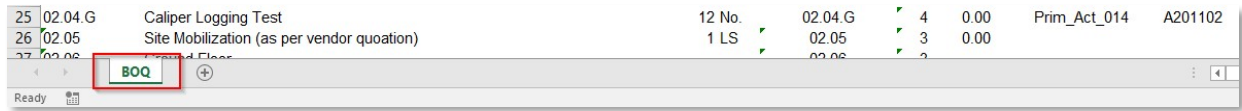
The first row in the Excel file which will be processed is row number 5.

	A	B	C	D	E	F	G	H	I
	Cost Code	Cost Description	Qty	Unit	Package Code	Level No	Rate	Primavera Activity	Comp.Cost Code
1									
2									
3									
4									
5	02	Site			02	2			
6	02.01	Earth Work Excavation in Any type of ground with Mechanical Equipment and/or Tools, including dewatering, Stockpile Excavated Materials Suitable for Backfilling in Approved Locations, Load and Transport Remainder to Approved Dumps:			02.01	3			
7	02.01.A	Excavation in bulk for second basement.	31535	m3	02.01.A	4	0.00	Prim_Act_001	A201106
8	02.01.B	Shoring and Protection of adjacent buildings	1	LS	02.01.B	4	0.00	Prim_Act_002	B101102
9	02.01.C	Selected backfilling Materials	228	m3	02.01.C	4	0.00	Prim_Act_003	A201106
10	02.02	Anti-Termite Control			02.02	3			B101102
11	02.02.D	Anti-termite area.	5957	m2	02.02.D	4	0.00	Prim_Act_004	A201105
12	02.03	Cast-In-Place Concrete Piles Piles: Bored Cast In Place Reinforced Concrete Piles, With Cement Type-II To Astm C150 ,Having Minimum Compressive Strength Of 35 Mpa After 28 Days, Including Deformed High Grade Epoxy Coated Reinforcing Steel With Minimum Yield Strength of 420 Mpa , Boring, Slurry Drilling Fluids and Casing (If Required), Disposal of Excess Materials, All Complete as per Drawings and Specifications			02.03	3			
13	02.03.E	Pile Type (P1): 800 mm Dia. 30.15 m Long	52	No.	02.03.E	4	0.00	Prim_Act_004	A201105
14	02.03.F	Pile Type (P2): 800 mm Dia. 34.00 m Long	17	No.	02.03.F	4	0.00	Prim_Act_005	A201106
15	02.03.G	Pile Type (P3): 800 mm Dia. 34.15 m Long	135	No.	02.03.G	4	0.00	Prim_Act_006	A201302
16	02.03.H	Pile Type (P4): 800 mm Dia. 28.15 m Long	17	No.	02.03.H	4	0.00	Prim_Act_007	B102104
17	02.03.I	Pile Type (P5): 800 mm Dia. 28.15 m Long	8	No.	02.03.I	4	0.00	Prim_Act_008	A201106

- CostCode:** The user must create a code based on a hierarchy. Each level should contain the previous levels (parent code) in the beginning, followed by a dot ('.'). In our example, costcode line 7 ("02.01.A") contains parent "02.01" followed by a dot and the id of the specific line. Line 6 ("02.01") contains parent "02" followed by a dot and the id of the specific line.
- CostDescription:** A description up to 1200 characters
- Qnt:** Numeric Quantity field up to 3 decimal digits. (only the last sub-levels in each level must have a Qnt)
- Unit:** Unit of measurement
- Package Code:** These are the Package Code Values (you can apply this information link to the last levels).
- Level No:** Starting with level 2 all cost codes under this will be calculated accordantly.
- Rate:** This is the Unit Price. During Import, the system multiplies Qnt by Rate and thus calculates the total selling amount.
- Primavera Activity:** (Optional) Character string which contains a link with primavera. (only last levels must be completed)
- Comp Cost Code:** These are the Cost Account Values (you can apply this information link to the last levels).

Note

The Excel File must contain a sheet with the name "BOQ".



25	02.04.G	Caliper Logging Test	12 No.	02.04.G	4	0.00	Prim_Act_014	A201102
26	02.05	Site Mobilization (as per vendor quotation)	1 LS	02.05	3	0.00		
27	02.06	...		02.06	2			

4 Step 3 – Result in ProjectVIEW

After the import is completed, the budget analysis screen will look like the following screenshot:

Cost Code	Cost Description	Qty	Item Unit Code	Level No	Unit Rate	Divisions	Package Code	Area	Cost Budget Item
Grid Add Prompt									
02	Site	0		2	0.00	02	02		
02.01	Earth Work Excavation in Any type of ground with Mechanical Equipment and/or Tools, including dewatering, Stockpile Excavated Materials Suitable for Backfilling in Approved Locations, Load and Transport Remainder to Approved Dumps:	0		3	0.00	02	02.01		
02.01.A	Excavation in bulk for second basement.	31535	m3	4	0.00	02	02.01.A	Prim_Act_001	A201106
02.01.B	Shoring and Protection of adjacent buildings	1	LS	4	0.00	02	02.01.B	Prim_Act_002	B101102
02.01.C	Selected backfilling Materials	228	m3	4	0.00	02	02.01.C	Prim_Act_003	A201106
02.02	Anti-Termite Control	0		3	0.00	02	02.02		B101102
02.02.D	Anti-termite area.	5957	m2	4	0.00	02	02.02.D	Prim_Act_004	A201105
02.03	Cast-In-Place Concrete Piles Piles: Bored Cast In Place Reinforced Concrete Piles, With Cement Type-II To Astm C150 ,Having Minimum Compressive Strength Of 35 Mpa After 28 Days, Including Deformed High Grade Epoxy Coated Reinforcing Steel With Minimum Yield Strength of 420 Mpa ,Boring, Slurry Drilling Fluids and Casing (If Required), Disposal of Excess Materials, All Complete as per Drawin...	0		3	0.00	02	02.03		
02.03.E	Pile Type (P1): 800 mm Dia. 30.15 m Long	52	No.	4	0.00	02	02.03.E	Prim_Act_004	A201105
02.03.F	Pile Type (P2): 800 mm Dia. 34.00 m Long	17	No.	4	0.00	02	02.03.F	Prim_Act_005	A201106
02.03.G	Pile Type (P3): 800 mm Dia. 34.15 m Long	135	No.	4	0.00	02	02.03.G	Prim_Act_006	A201302
02.03.H	Pile Type (P4): 800 mm Dia. 28.15 m Long	17	No.	4	0.00	02	02.03.H	Prim_Act_007	B102104
02.03.I	Pile Type (P5): 800 mm Dia. 28.15 m Long	8	No.	4	0.00	02	02.03.I	Prim_Act_008	A201106



In case of any queries or support issues, please
contact us:

DANAOS Projects Software Solutions

Tamani Head Office - Office 1923

Business Bay

Dubai - UAE, P.O. Box 24051

Email: support@danaos-projects.com

Tel: +971 4 8714149